

# Air-Hydraulic Pumps type GLOP 6-8-10

## DESCRIPTION AND TECHNICAL DATA OF THE AIR-HYDRAULIC PUMPS.

The air-hydraulic pumps GLOP are suitable to reach high pressures without any manual force.

Applications are in various fields: pressing, cutting, tightening, bolting, hydraulic testing etc.

The function with pedal, allows the operator to have both hands free during the operations, offering like this remarkable saving of time and perfect execution of all operations.

The pumps do not require any special maintenance; they are equipped with specially treated steel poppet style valves with a filter on each valve. In order to avoid any misfunction the hydraulic oil must be free of contamination.

The pumps GLOP 625- 725-825 have a double co-axial piston system which allows a high oil-flow up to 30 Bar and then automatically switches over to low oil-flow to reach very high pressures ( up to 750 bar ).

This results in great saving of time in many applications on hydraulic cylinders.

They are equipped with a relief valve which is adjustable from outside.

When reaching the required pressure, they remain under pressure also for long periods, without any damage.

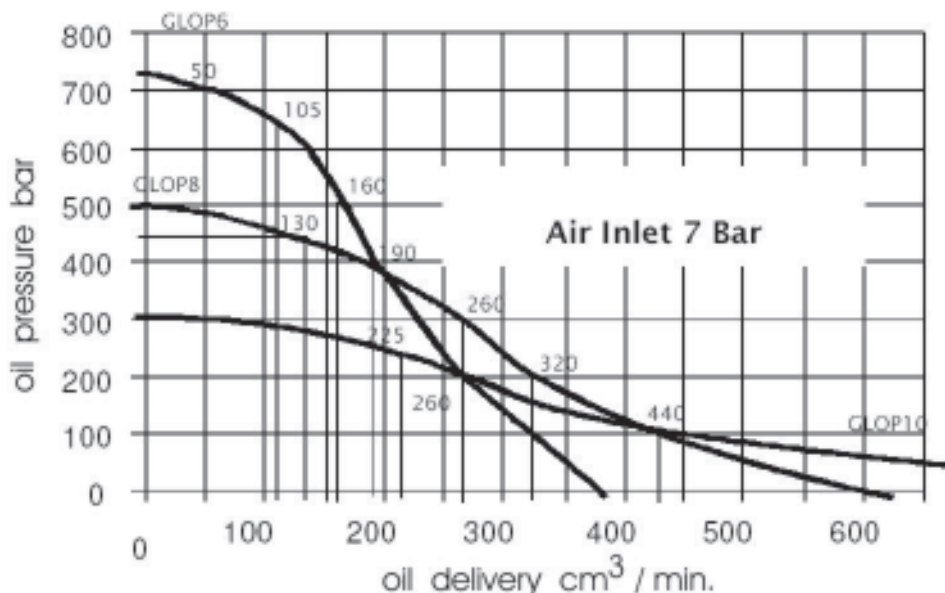
Installation can be in system with air pressure of 3 to 10 Bar; it is suggested to put a lubrication filter for the air before connecting the pump, suitable for 400 to 450 N lt/ min.

The models GLOP 6-8-10 have one single pumping piston.

Due to the relatively low pumping capacity, these pumps are suitable for cylinders of small dimensions.

They are equipped with a relief valve, same as GLOP 625 / 725 / 825.

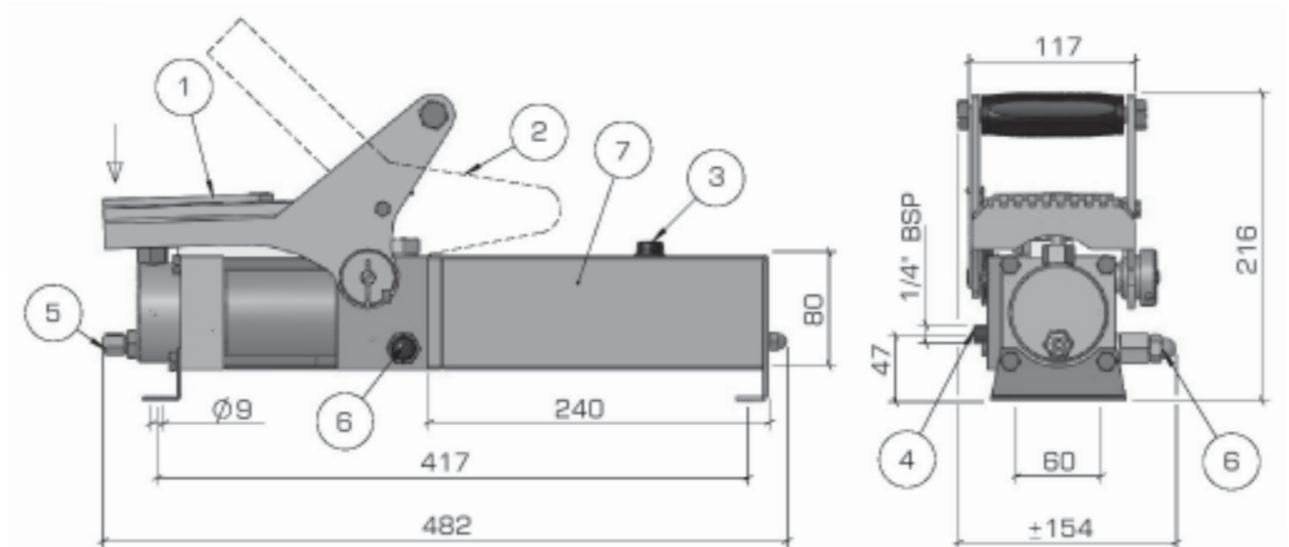
GLOP 6 - 8 - 10 Pressure / Delivery diagram



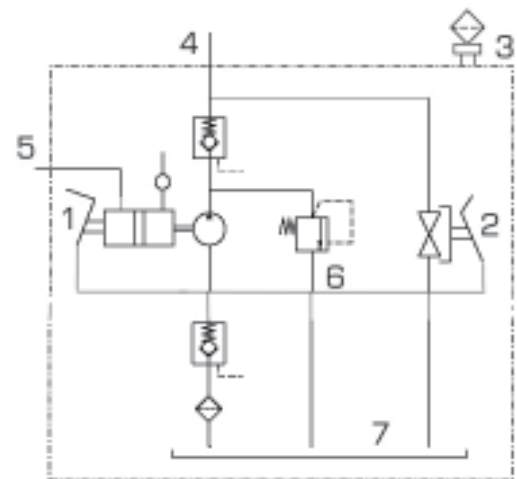
Dimensions and characteristics not binding. Modifications reserved without prior notice.

# Single Speed Air-Hydraulic Pump type GLOP 6 - 8-10

Mounting position




- 1 - Pump operation pedal
- 2 - Release pedal position
- 3 - Filler plug
- 4 - Pressure port ( 1/4" BSP )
- 5 - Air inlet port ( 1/4" BSP )
- 6 - Pressure setting
- 7 - Tank



Materials :

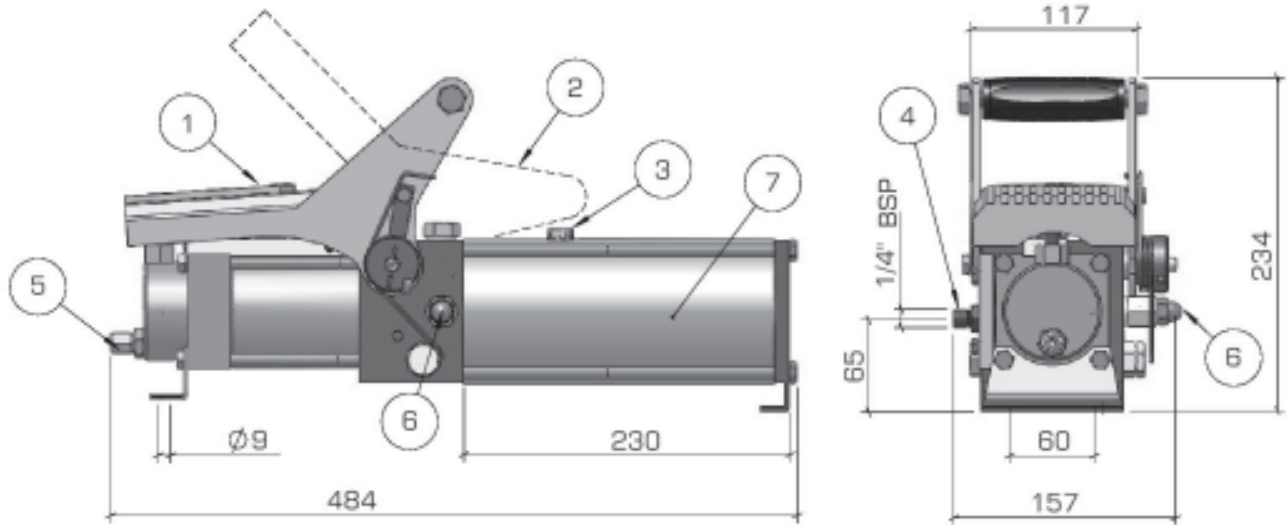
- Steel tank and pump housing
- Alluminium pedal

Mounting position: as dwg

ORDER CODE	TYPE	DELIVERY cm <sup>3</sup> / min.	PRESSURE bar	TANK lt	AIR CONSUMPTION lt / min.	
PGA00GLOP600000000	GLOP 6	see diagram		1,3	50	9,0
PGA00GLOP800000000	GLOP 8	see diagram		1,3	46	9,0
PGA00GLOP100000000	GLOP 10	see diagram		1,3	43	9,0

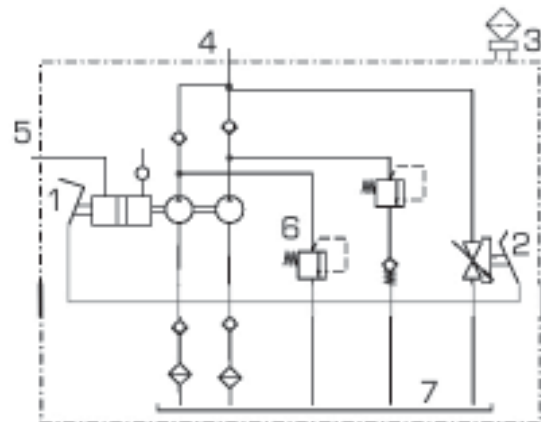
Dimensions and characteristics not binding. Modifications reserved without prior notice.

# Two Speed Air-Hydraulic Pumps type GLOP 625-725-825



Mounting position


- 1 - Pump operation pedal
- 2 - Release pedal position
- 3 - Filler plug
- 4 - Pressure port ( 1/4" BSP )
- 5 - Air inlet port ( 1/4" BSP )
- 6 - Pressure setting
- 7 - Tank



Materials :

- Steel tank and pump housing
- Alluminium pedal

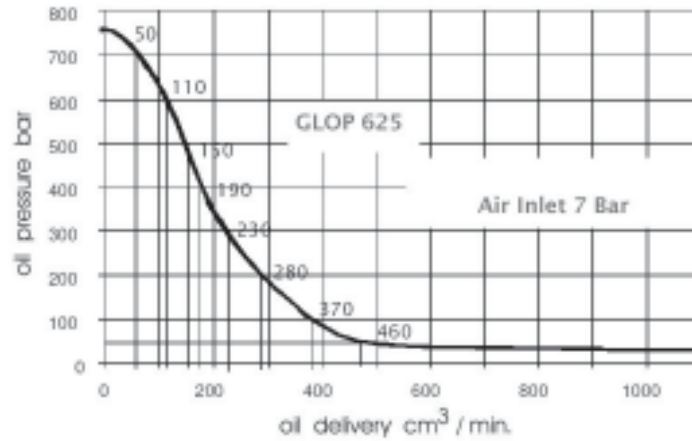
Mounting position: as dwg

ORDER CODE	TYPE	DELIVERY cm <sup>3</sup> / min.	PRESSURE bar	TANK lt	AIR CONSUMPTION lt / min.	
PGA00GLOP625000000	GLOP 625	see diagram		1,2	43	14,3
PGA00GLOP725000000	GLOP 725	see diagram		1,2	43	14,3
PGA00GLOP825000000	GLOP 825	see diagram		1,2	43	14,3

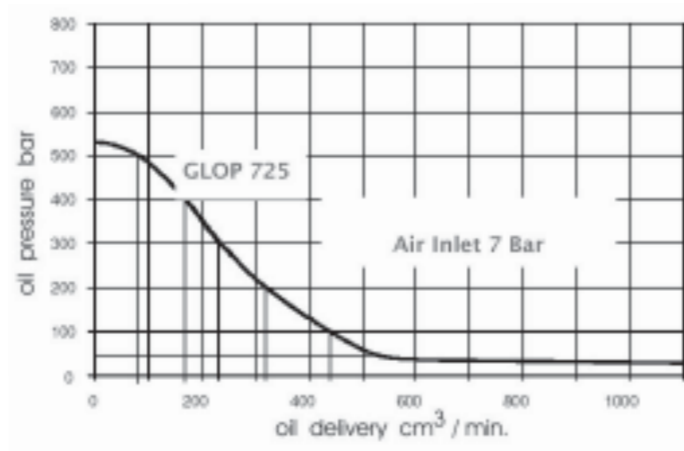
Dimensions and characteristics not binding. Modifications reserved without prior notice.

# Two Speed Air-Hydraulic Pumps type GLOP 625-725-825

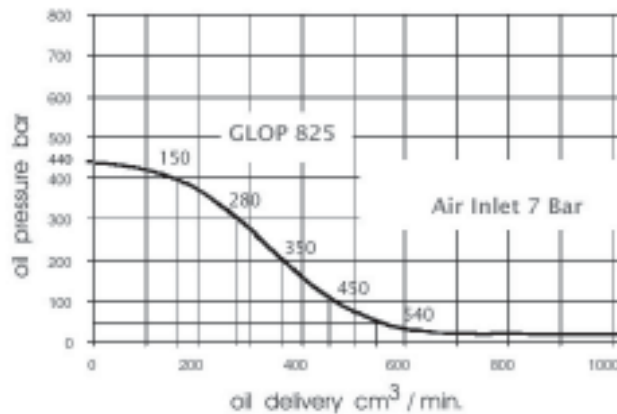
GLOP 625 Pressure / Delivery diagram



GLOP 725 Pressure / Delivery diagram



GLOP 825 Pressure / Delivery diagram



Dimensions and characteristics not binding. Modifications reserved without prior notice.