

## Air-Hydraulic Pump type GLOP

### DESCRIPTION AND TECHNICAL DATA OF THE AIR-HYDRAULIC PUMPS.

The air-hydraulic pumps GLOP are suitable to reach high pressures without any manual force. Applications are in various fields: pressing, cutting, tightening, bolting, hydraulic testing etc. The function with pedal, allows the operator to have both the hands free during the operations, offering like this remarkable saving of time and perfect execution of all operations. The pumps do not require any special maintenance: they are equipped with specially treated steel poppet style valves with a filter on each valve. In order to avoid any malfunction the hydraulic oil, should be free of contamination.

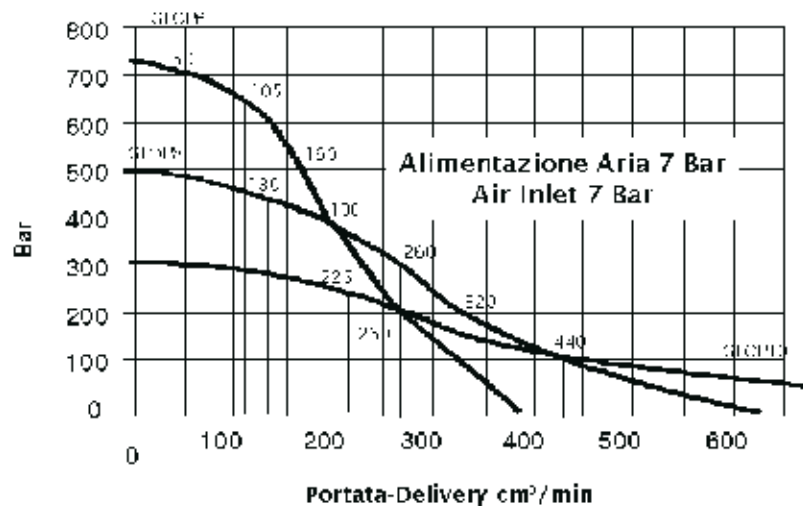
The pumps GLOP 625-725-825 have a double co-axial piston system which allows a high oil-flow up to 30 Bar and then automatically switches over to low oil-flow to reach very high pressures. This results in great saving of time in many applications on hydraulic cylinders. They are equipped with a relief valve which is adjustable from outside. When reaching the required pressure, they remain under pressure also for long periods, without any damage. Installation can be in system with air pressure of 3 to 10 Bar; it is suggested to put a lubrication filter for the air before connecting the pump, suitable for 400 to 450 NL/min.

The models GLOP 6-8-10 have one single pumping piston.

Due to the relatively low pumping capacity, these pumps are suitable for cylinders of small dimensions.

They are equipped with a relief valve, same as GLOP 625/725/825.

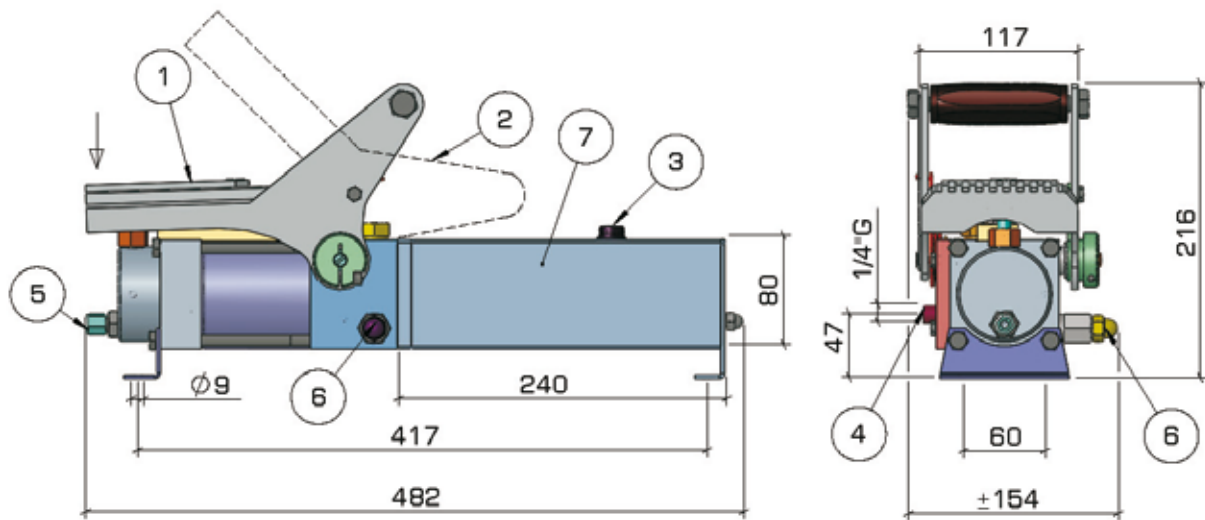
GLOP 6-8-10-Pressure/Delivery diagram



Dimensions and characteristics not binding. Modifications reserved without prior notice.

## Pump type GLOP 6-8-10

Single Speed Air-Hydraulic pump

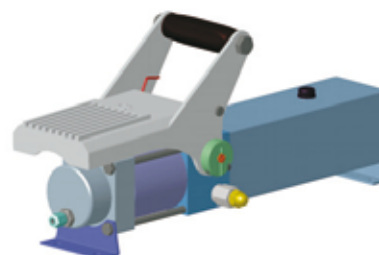
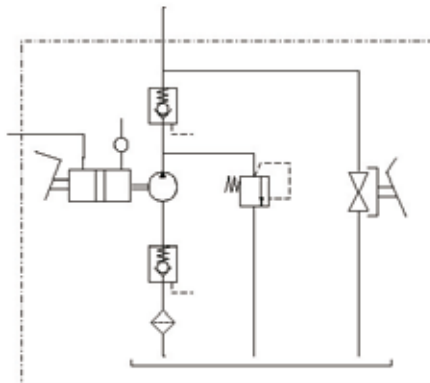
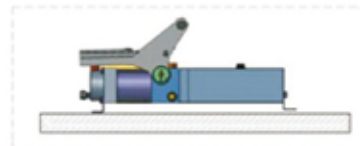


| TYPE    | DELIVERY CC/min | PRESSURE BAR | AIR CONSUMPTION L/min |
|---------|-----------------|--------------|-----------------------|
| GLOP 6  | 370             | 700          | 50                    |
| GLOP 8  | 600             | 500          | 46                    |
| GLOP 10 | 900             | 300          | 43                    |

Weight (with oil) Kg. ~9

- 1 Pump Operation
- 2 Oil Discharge
- 3 Filler Plug
- 4 Pressure Port
- 5 Air Inlet
- 6 Max. Pressure Setting
- 7 Tank L. 1,3

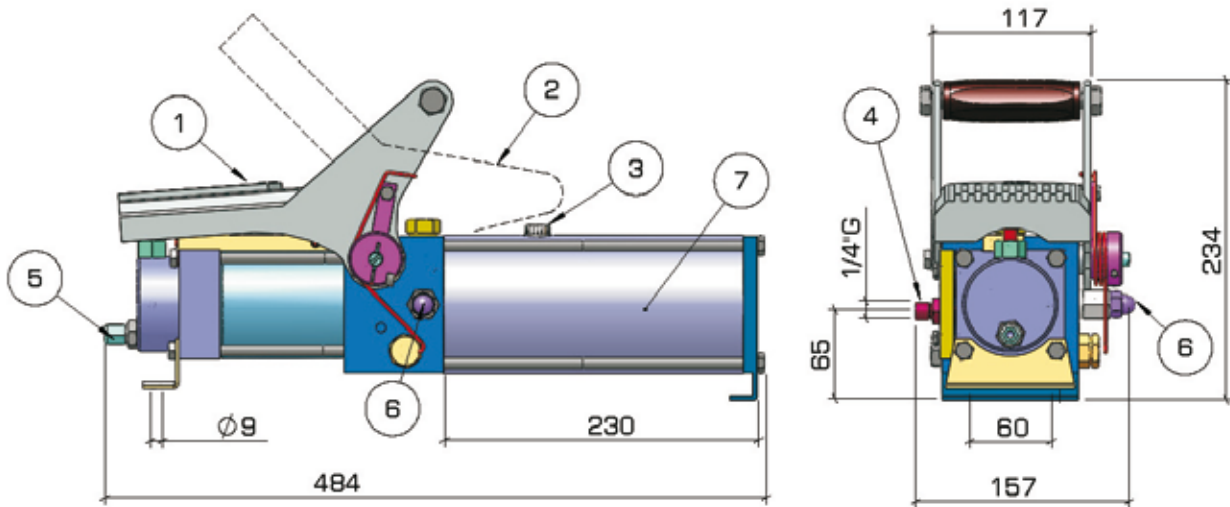
Mounting:



Dimensions and characteristics not binding. Modifications reserved without prior notice.

## Pump type GLOP 625-725-825

Twin Speed Air-Hydraulic pump

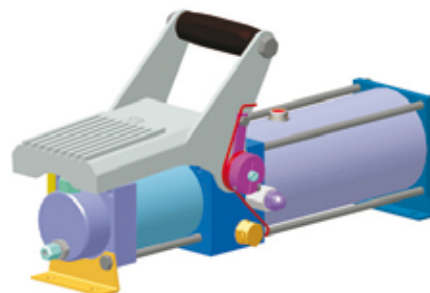
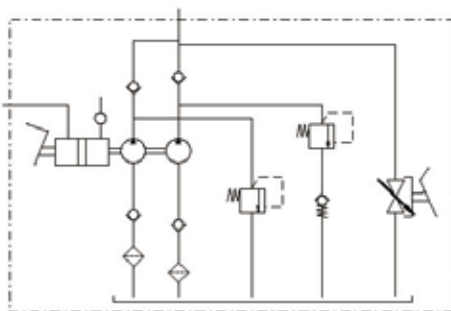
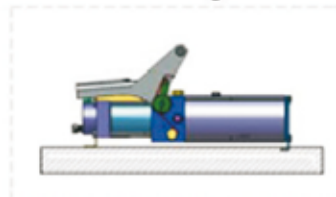


| TYPE     | PRESSURE PORT CC/min |            |            |            | Pressure   | Air Consumption L/min |
|----------|----------------------|------------|------------|------------|------------|-----------------------|
|          | 0 Bar oil            | 10 Bar oil | 20 Bar oil | 30 Bar oil |            |                       |
| GLOP 625 | 6000                 | 5000       | 4000       | 3000       | Air 10 Bar | 43                    |
| GLOP 725 | 6000                 | 5000       | 4000       | 3000       | 700 Bar    | 43                    |
| GLOP 825 | 6000                 | 5000       | 4000       | 3000       | 600 Bar    | 43                    |

Weight (with oil) Kg. – 14,3

- 1 Pump Operation
- 2 Oil Discharge
- 3 Filler Plug
- 4 Pressure Port
- 5 Air Inlet
- 6 Max. Pressure Setting
- 7 Tank L. 1.2

Mounting:



Dimensions and characteristics not binding. Modifications reserved without prior notice.