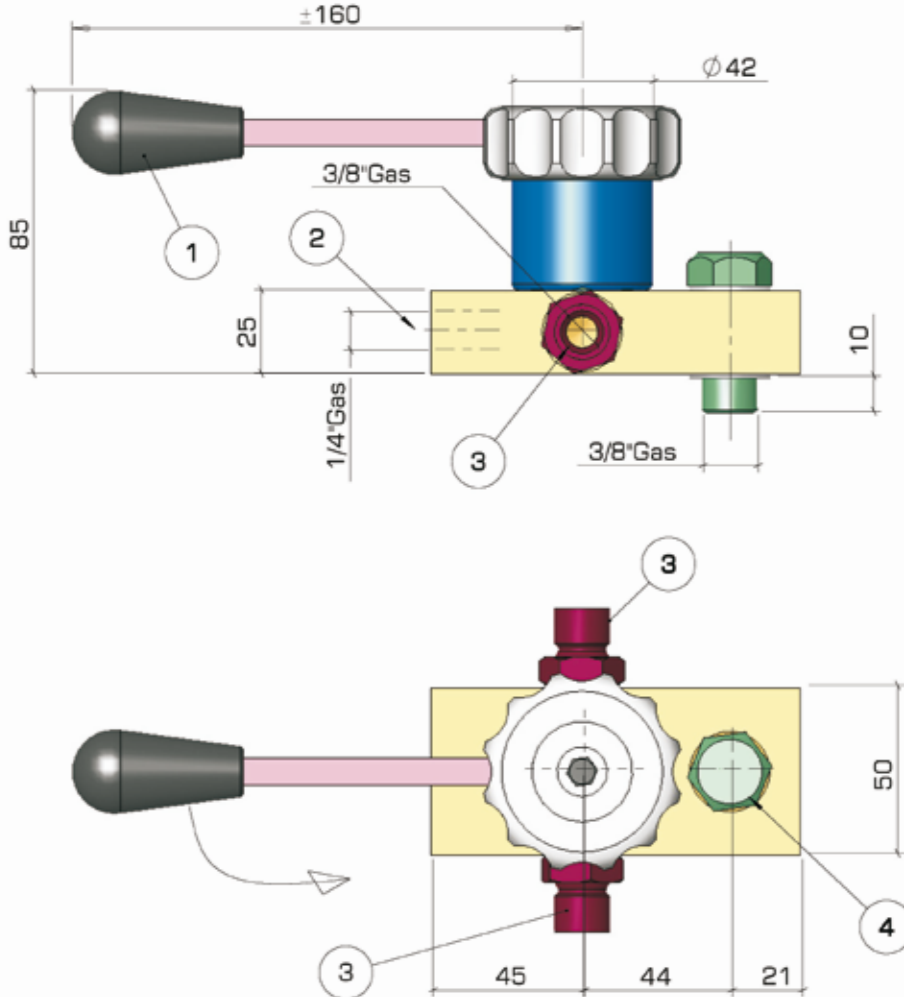


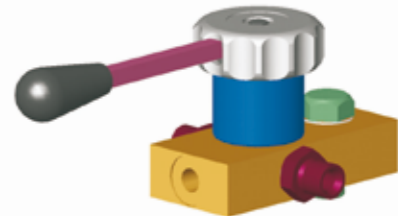
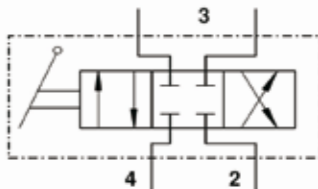
Accessories

Four way diverter valve type GL4VN



Weight Kg. ~1,7

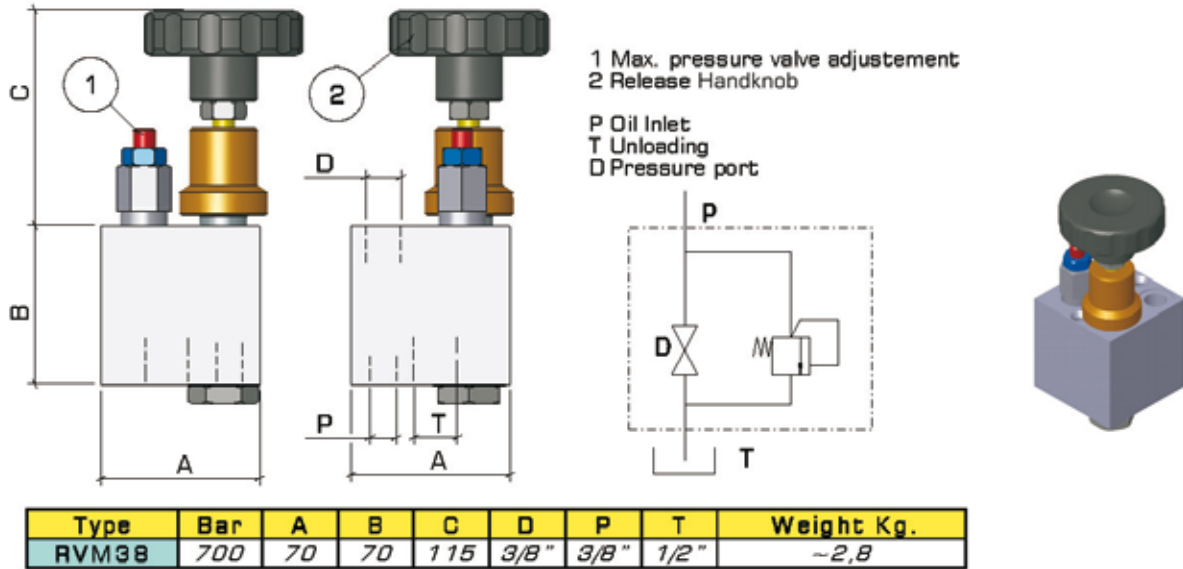
- 1 Flow Diverter Lever
- 2 Oil Discharge
- 3 Pressure Port
- 4 Oil Inlet



4-Way-diverter valve for the control of double acting cylinders;
with modifications also available for nearly all other pump models.

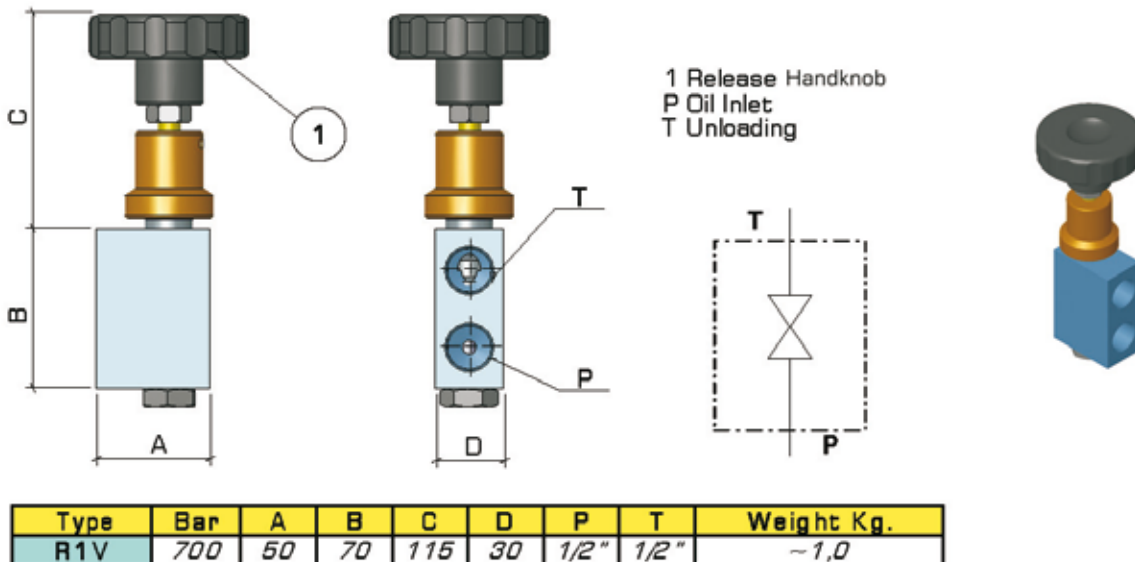
Dimensions and characteristics not binding. Modifications reserved without prior notice.

Accessories Relief+Throttle Valve type RVM



APPLICATIONS: Thanks to the reduced dimensions, this valve is specially suitable for installation on power-packs.
FEATURES: Made in steel; easy installation; machining on most advanced facilities; easy maintenance. Combination of ball valve series "R1V" and relief valve series "VMP" maintaining the same characteristics of those.

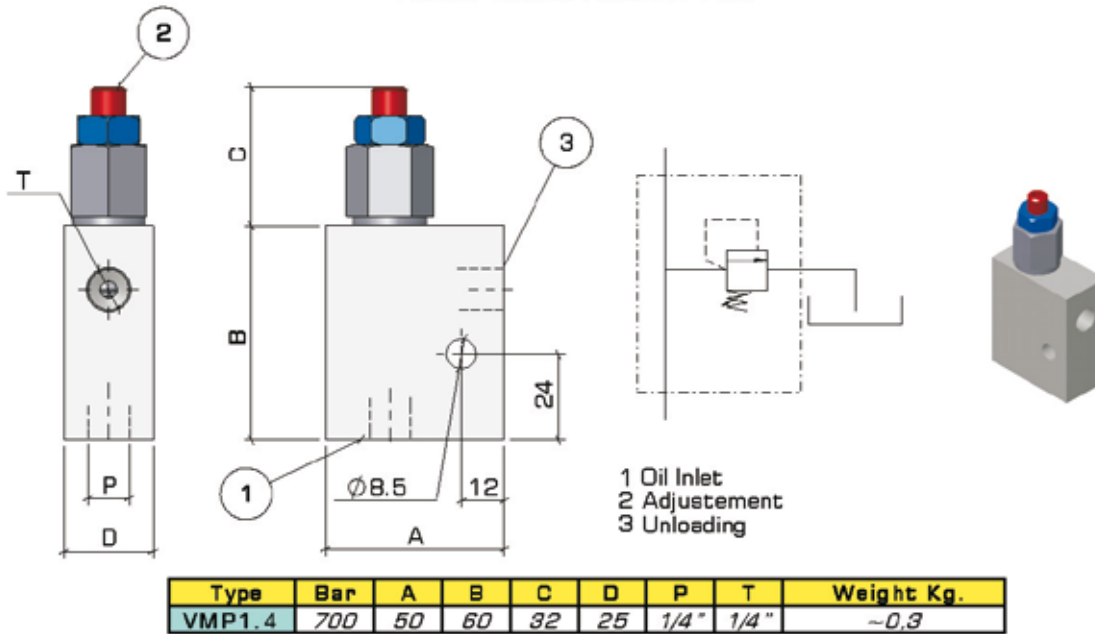
Needle Valve type R1V



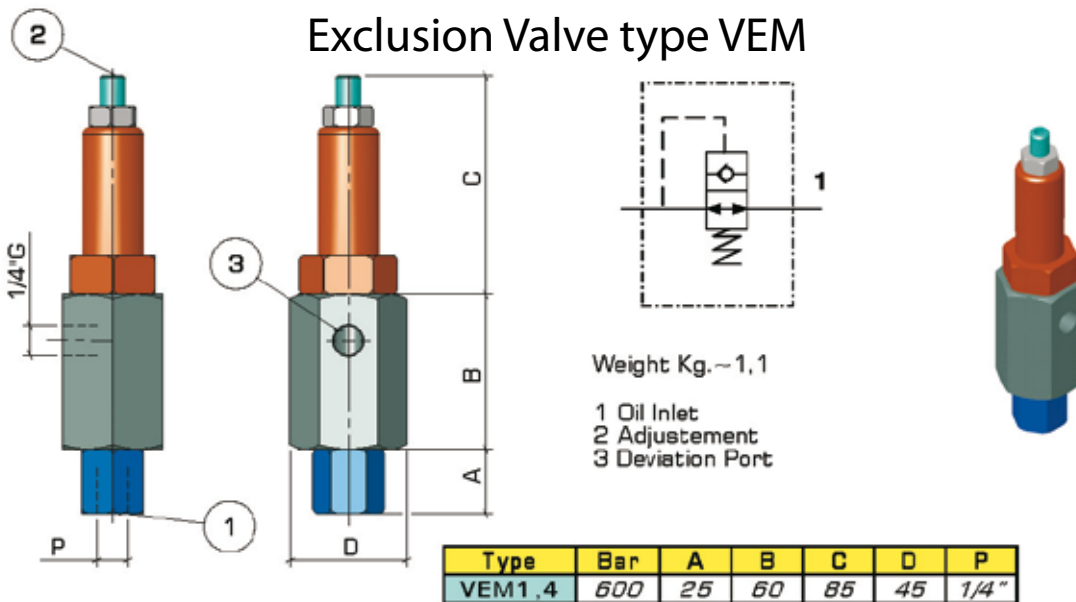
APPLICATIONS: in hydraulic circuit with necessity of rapid pressure unloading by connecting the pressure line to the tank during passages from one operation to another, or to shut down or feed in rapidly oil into the circuit.
FEATURES: Made in steel by using most advanced manufacturing facilities; easy to maintenance; corrosion proof; perfectly closing without any drain at any pressure.

Dimensions and characteristics not binding. Modifications reserved without prior notice.

Accessories Pressure Relief Valve type VMP



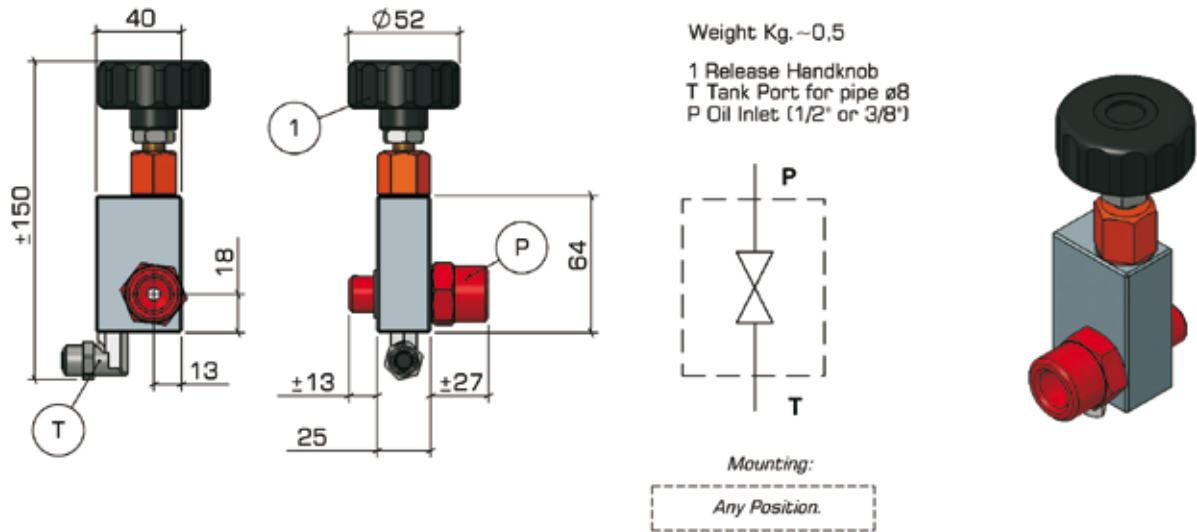
APPLICATIONS: The VMP valves avoid that peak-pressures can damage components of the hydraulic circuit (pumps, motors, gauges, etc.).
FEATURES: Made in aluminium by using most advanced manufacturing facilities; easy maintenance; corrosion proof; adjustable for pressures between 5 and 700 Bar by acting on the setting spring.



APPLICATIONS: used in circuits which need the exclusion by means of interception of the oil-flow to specific components.
FEATURES: made in steel by using most advanced manufacturing facilities; easy maintenance; no pressure drop. Setting of pressure is obtained by acting on the setting spring which, by means of a piston, commands a ball which excludes the oil-flow. In order to assure good function, it is essential that the oil is without contamination.

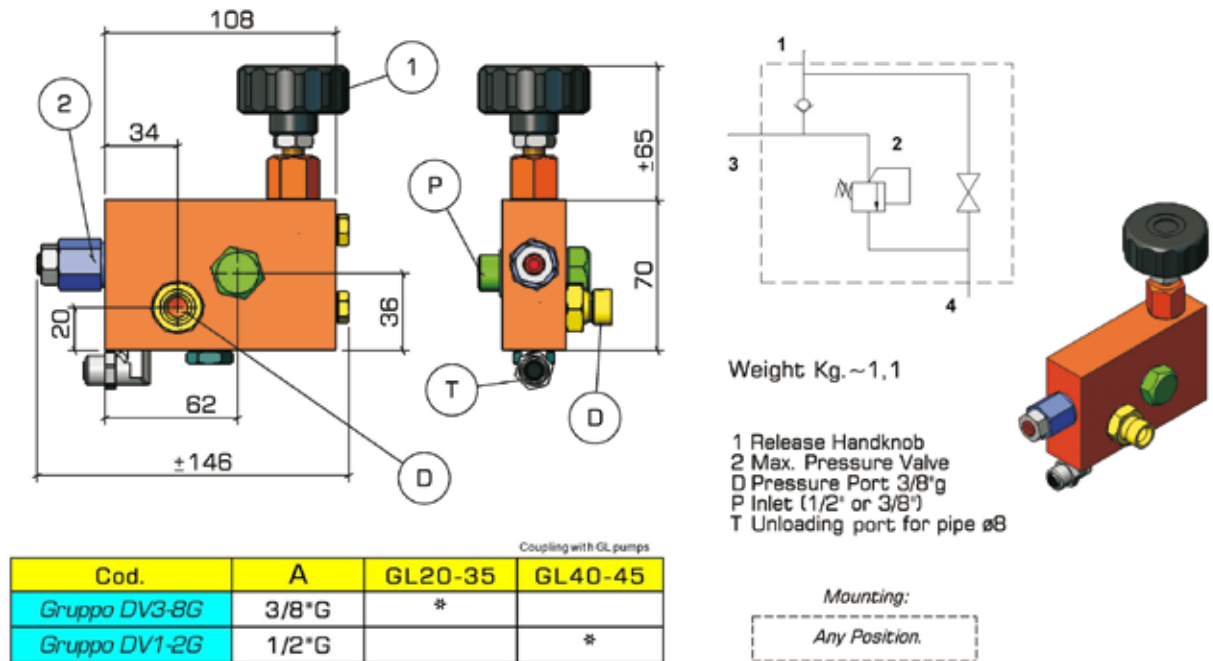
Dimensions and characteristics not binding. Modifications reserved without prior notice.

Accessories Needle Valve Type D



APPLICATIONS: in hydraulic circuit with necessity of rapid pressure unloading by connecting the pressure line to the tank. Available on pumps type GL.
FEATURES: Made in aluminium by using most advanced manufacturing facilities; easy to maintenance; corrosion proof.

Relief+Needle Valve type DV



APPLICATIONS: in hydraulic circuit with necessity of rapid pressure unloading by connecting the pressure line to the tank and max. pressure setting. Available on pumps type GL.
FEATURES: Made in aluminium by using most advanced manufacturing facilities; easy to maintenance; corrosion proof.

Dimensions and characteristics not binding. Modifications reserved without prior notice.